

CUSTOMER:神牛

NO.:2021051208

DISTRIBUTOR:健策
PE48AA1)

APPROVE SHEET
[Compliance with RoHS]

PRODUCT: DC BRUSHLESS FAN

USER P/N: _____

Parts No.: JF0825B1LM0112KMSR

Printed model number on the stick: JF0825B1LM-R

(SIGNATURE)



JAMICON GROUP
KAIMEI ELECTRONIC CORP
Tel: +886-2-26981010
Fax: +886-2-26980386



APPROVED	CHECKED	DRAWN
		郝文姣 2021/05/12

微信扫码
咨询工程师



JIAN 健策
0755-23706799

Records of Revision

Part No.	JF0825B1LM0112KMSR	Customer:	健策-神牛
Rev	Revision Description	Date	
A0	First edition	2021/05/12	

JIAN 健策

JIAN 健策
 0755—23706799



1. MECHANICAL:

1-01	Dimension	Dimension of fan shall be shown in the outline styling drawing attached.
1-02	Motor	Four-pole motor.
1-03	Frame	Plastic material UL 94V-0 (P.B.T)
1-04	Impeller	Plastic material UL 94V-0 (P.B.T)
1-05	Free drop shock	In minute package condition, the fan should withstand each one drop of three faces from 30cm distance height onto 10 mm thickness of wooden board.

2.ELECTRICAL: 25°C/65%RH

2-01	Rated current	Rated current shall be measured after 30 minutes continuous rotation at rated voltage.
2-02	Start voltage	The voltage that enable to start the fan by sudden switch on.
2-03	Rated Speed	Rated speed shall be measured after 30 minutes continuous rotation at rated voltage.
2-04	Input Power	Input power shall be measured after 30 minutes continuous rotation at rated voltage.
2-05	Lock Current	Locked current shall be measured Within one minute at rotor locked, after 30 minutes continuous rotation at rated voltage in clear air.
2-06	Insulation resistance	More than 10M ohm at 500 V.D.C between lead and housing.
2-07	Dielectric strength	Measured 5 mA(max) trip current at 700 V.A.C for 3 sec. between lead and housing.
2-08	Locked motor protection	Designed to meet UL, CUL and TUV.
2-09	DO NOT use power or ground PWM to control the fan speed.If the fan speed needs to be adjusted,please contact JAMICON to customize the product design for your application	

JIAN 健策

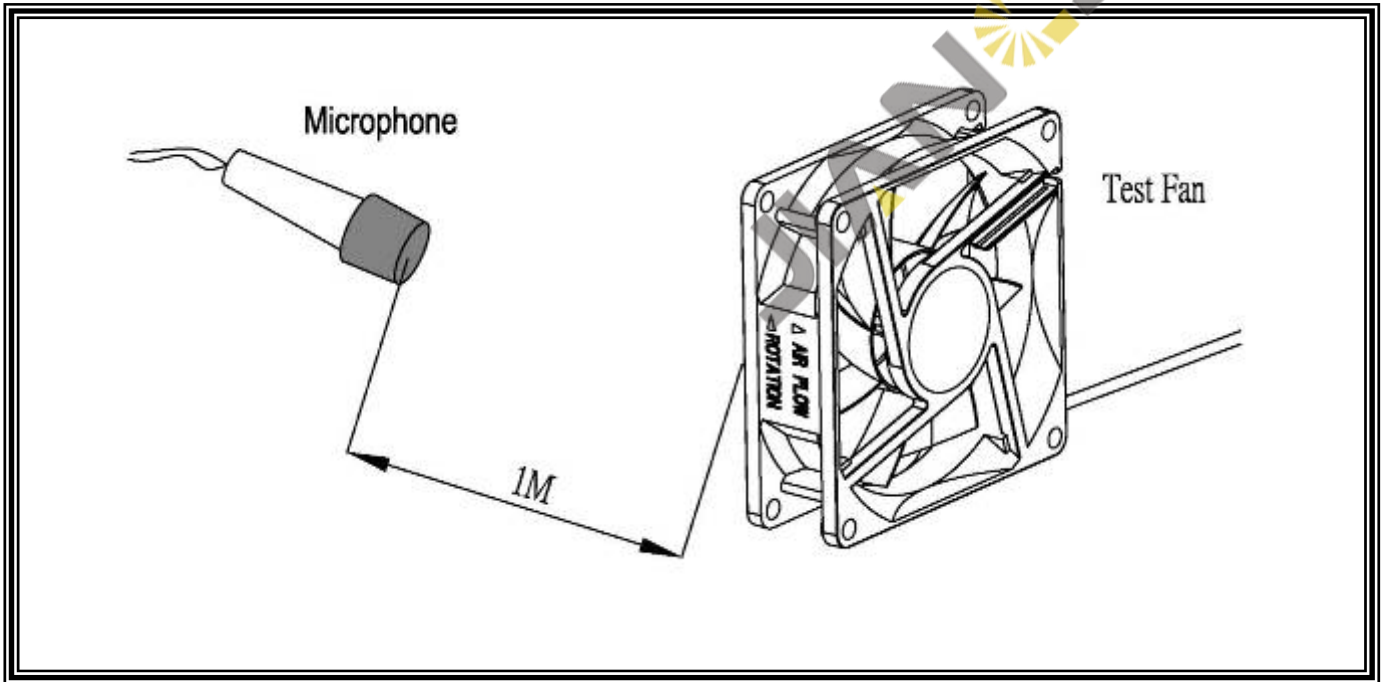
0755—23706799

微信扫码
咨询工程师



3.CHARACTERISTICS:

3-01	Air Flow & Static Pressure	The air flow data and static pressures should be determined in accordance with AMCA standard or DIN 24163 specification in a double- chamber testing with intake-side measurement.
3-02	Noise level	The measurement of noise level is carried out with reference to DIN 45635 in an echoic chamber with the microphone positioned 1 M from the air intake. Testing fan shall be hung in clean air.



4.ENVIRONMENTAL:

4-01	Operating temperature	-10°C to 70°C (ordinary humidity)
4-02	Storage Temperature	-40°C to 70°C (ordinary humidity)
4-03	Humidity	After 96 hrs, 95% RH 40±2°C per MIL-STD-202F method 103B, Humidity test , The measured data of insulation resistance & dielectric strength should meet the specification listed in attach.
4-04	Thermal Shock	After thermal shock test per MIL-STD-202F method 107D, Condition D, The measured data of insulation resistance & dielectric strength should the specification

JIAN 健策

0755—23706799

微信扫码
咨询工程师



5.DATA-SHEET:

PARTS NO.: JF0825B1LM0112KMSR

SAP NO.: J0825B1LM0112KMS

5-1. SPECIFICATION:

NO.	ITEM	SPECIFICATION	UNIT	CONDITION (25℃)
5-1-01	Dimension	80*80*25	mm	-----
5-1-02	Bearing	Dual Ball	-----	-----
5-1-03	Rated Voltage	12	VDC	-----
5-1-04	Operating Voltage	6.0 ~13.8	VDC	MAX. 13.8V
5-1-05	Start Voltage	6.0	VDC	On/off test max.
5-1-06	Speed	2000	R.P.M	±15%, At rated Voltage
5-1-07	Input Current	0.09	Amp	At rated Voltage
5-1-08	Input Power	1.08	Watt	At rated Voltage
5-1-09	Nominal Current	0.10	Amp	At rated Voltage
5-1-10	Air Flow	25.66	CFM	At 0 static Pressure of rated speed
5-1-11	Static Pressure	0.065	inchH ₂ O	At 0 air flow of rated speed
5-1-12	Noise	22.4	dBA	At rated speed
5-1-13	Life Expectancy(L10)	80,000	Hours	At40℃ (Bearing)
5-1-14	Motor protection	Eletronic protected		
5-1-15	Polarity protection	It will not damage the fan while reverse input.		
5-1-16	Auto Restart	YES	-----	-----
5-1-17	Speed Signal output	YES (1)	-----	-----
5-1-18	Alarm Signal output	NO	-----	-----
5-1-19	Rotation direction	From the label side	-----	Clockwise
5-1-20	Weight	73	Gram	Per each piece
5-1-21	Safety Certificate	UL, CUL, TUV, CE	-----	-----

5-2. LEAD WIRE:

NO.	ITEM	SPECIFICATION			
5-2-01	AWG NO. & Authorize	26AWG, UL1007			
5-2-02	Color	—	+	Speed	
		Black	Red	White	
5-2-03	Line Length	150±10mm			
5-2-04	Connector	Notes as: Pitch:2.5mm Housing:JST XHP-3 compatible parts.			
5-2-05	Tube	NO			

Note(1):Don't direct connect the speed/alarm signal output to "+" or "-".

KAIMEI ELECTRONIC CORP.

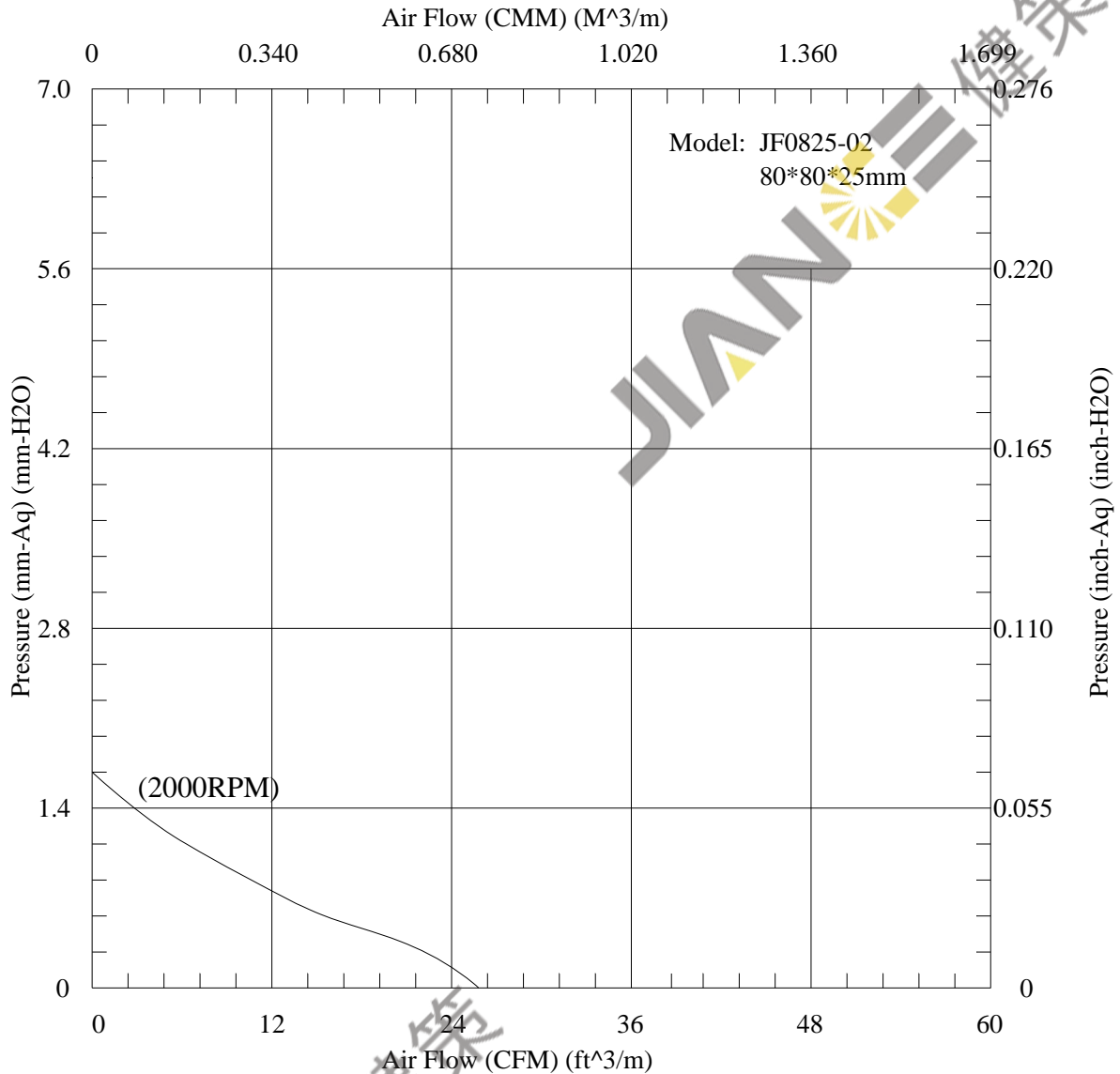
微信扫码
咨询工程师



JIAN 健策

0755-23706799

JAMICON FAN PERFORMANCE CURVES



JIAN 健策

JIAN 健策

0755—23706799

微信扫码
咨询工程师



KAIMEI ELECTRONIC CORP.

風扇振動噪音性能測試報告

(The Test Report of Fan Vibration and Noise)

風扇型號(Sample Type): JF0825

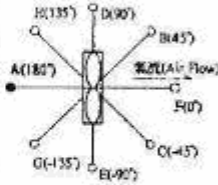
測試日期(Test Date): 2013/3/14 AM 11:35:37

基本規格(Properties): DC 12V 7葉 4極 2000RPM

測試編號(Test No.): (2)

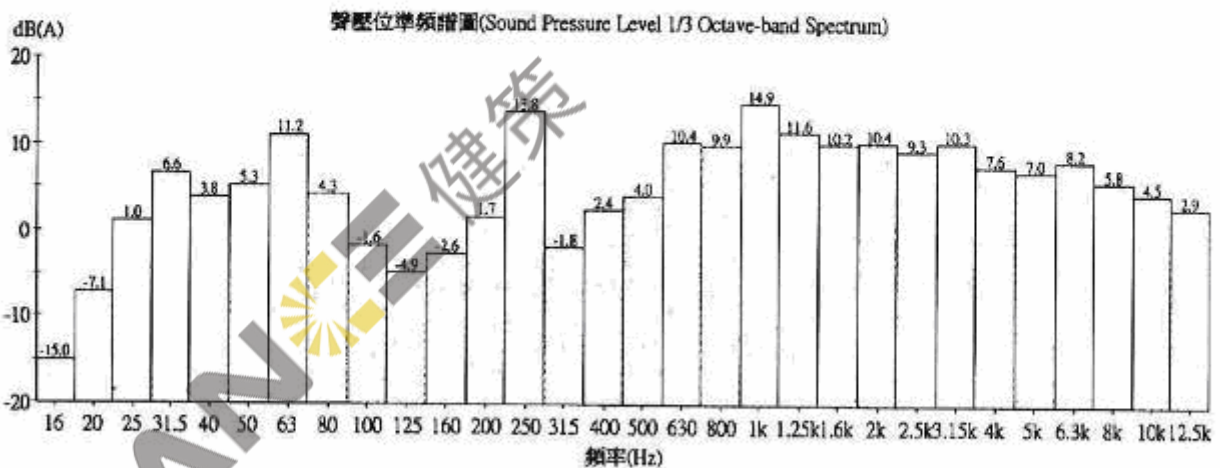
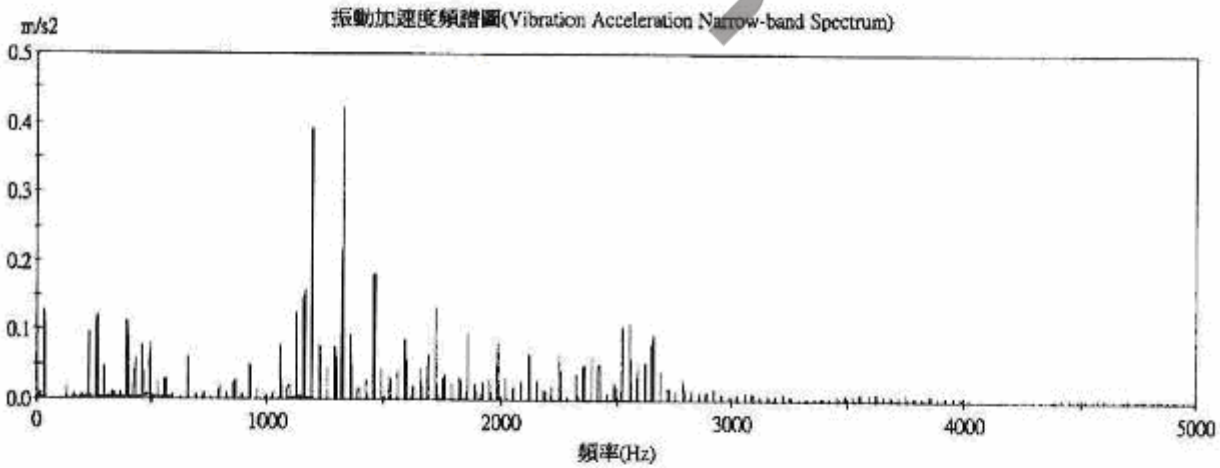
測試條件(Test Conditions)

- 輸入電壓(Input Voltage): 12 V
- 量測時間(Measuring Time): 20 sec
- 麥克風距離(Mic. Distance): 100 cm
- 麥克風角度(Mic. Angle): 180°
- 頻域加權(Freq. Weighting): A
- 時域加權(Time Weighting): SLOW
- 背景噪音(Background Noise): 15.0 dB(A)
- 溫度(Temperature): ℃
- 相對濕度(Relative Humidity): %



測試結果(Test Results)

- 電壓(Passing Voltage):
- 電流(Electric Current):
- 消耗功率(Power Dissipation):
- 轉速(Rotation Speed): 1999 RPM
- 振動量(Vibration Level) (依據 ISO 10816-1)
- 振動速度(Vib. Velocity): 0.72 mm/sec RMS
- 均能聲壓位準(Time-averaged SPL, Leq) (依據 CNS 8753)
- 量測點(At Meas. Point): 22.8 dB(A)
- 1 米處(At 1m Point): 22.1 dB(A)
- 最大聲壓位準(MaxL): 23.3 dB(A)
- 最小聲壓位準(MinL): 20.6 dB(A)



簽核人員(Signatory): _____

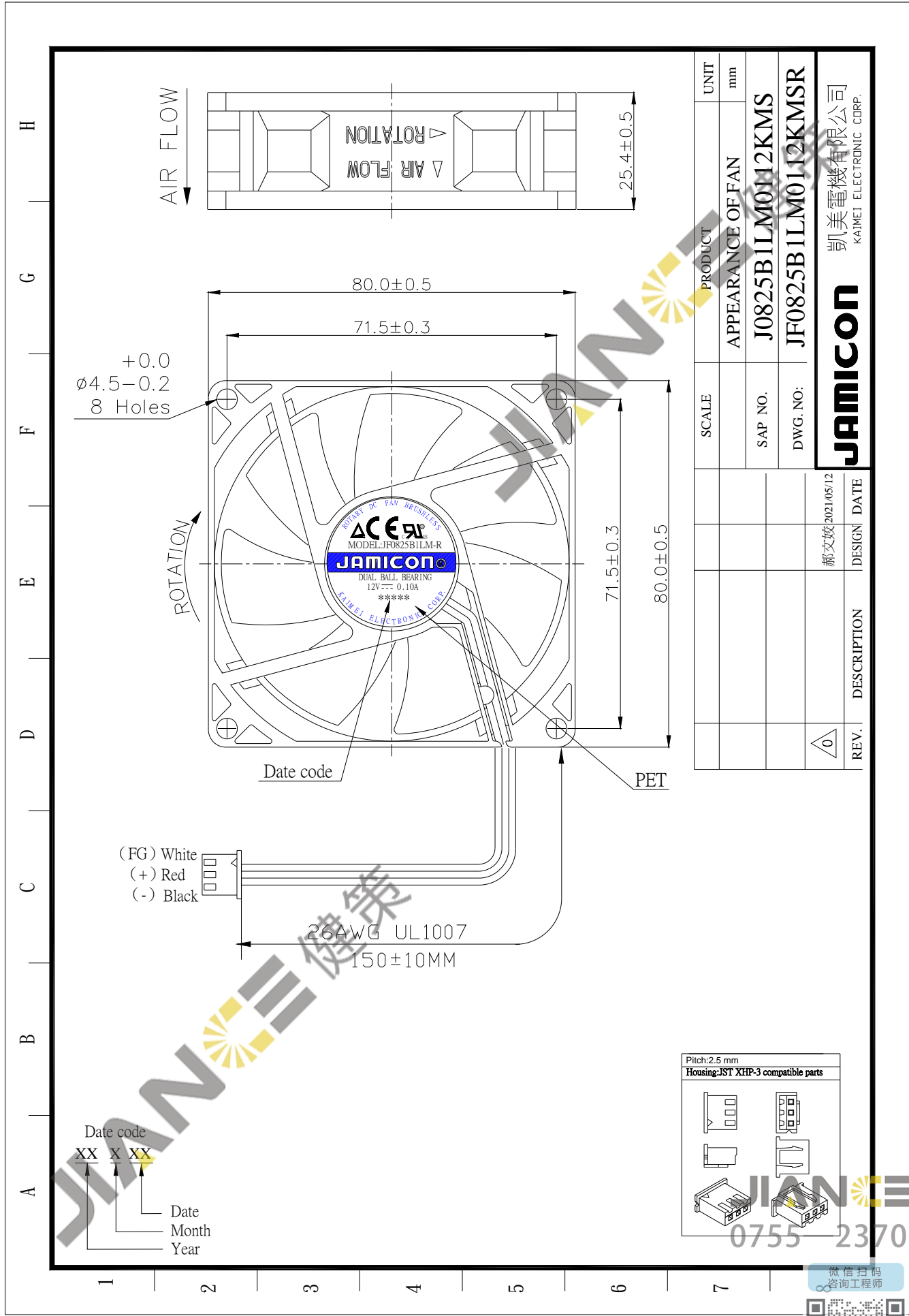
操作員(Operator): Yu 簽章(Signature)

系統開發(Developer): 工業技術研究院 機械工業研究所(MIRL/ITRI)

JIAN 健策
0755—23706799

微信扫码
咨询工程师

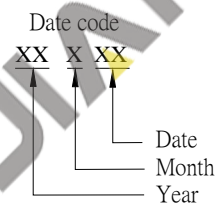
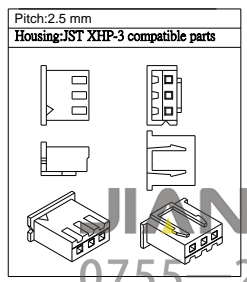




SCALE	PRODUCT	UNIT
	APPEARANCE OF FAN	mm
SAP NO.	J0825B1LM0112KMS	
DWG. NO.	JF0825B1LM0112KMSR	
REV.	DESCRIPTION	DESIGN DATE
0		郝文斌 2021/05/12

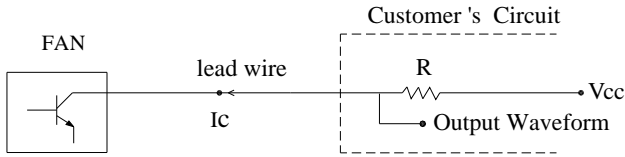
凯美电机有限公司
KAMEI ELECTRONIC CORP.

JAMICON



Auto restart /Tachometer signal (A)

.Diagram:



Please select R so that $I_c < 10 \text{ mA}$

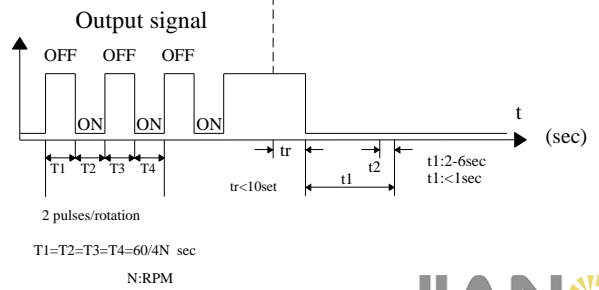
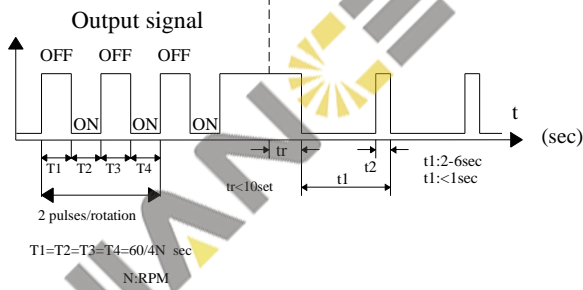
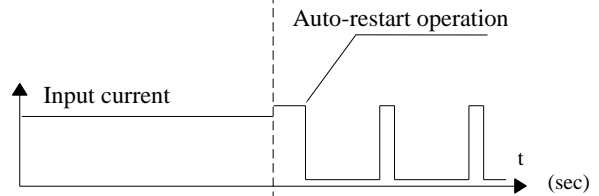
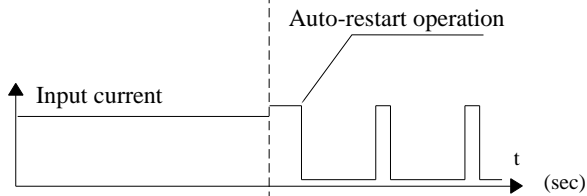
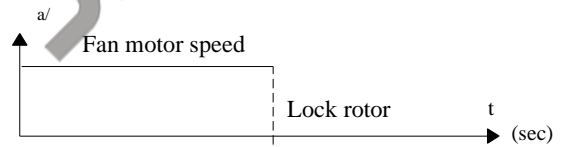
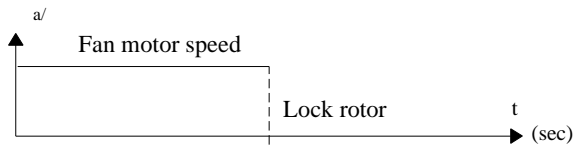
Where
Rated Voltage:5V
Vcc:7V max

Where
Rated Voltage:24V
Vcc:28V max

Where
Rated Voltage:12V
Vcc:16V max

Where
Rated Voltage:48V
Vcc:60V max

Type of signal



JIAN 健策
0755—23706799

